

# DIGITAL VIDEO COLPOSCOPE

Model -GC3000





***Features:***

- Sony HAD CCD
- Effective 14.8 Mega Pixels
- 1-40 x Magnification
- 3D perception with Digital Matrix processor
- 850 TVL Horizontal definition
- Facility to choose from 3 color images.
- Facility for fast focusing, Zooming & Image freezing
- High MCD super bright white shadow less LED light for true color reproduction
- Facility for Fast auto/manual focusing. Auto focus range of up to 20-30 cm
- Acetic acid test timer
- Side by Side Powerful Comparison of Colposcopy images
- LED lamp life should be > 20000 hrs.
- BNC & SVHS (2 Video Output) Zoom In & Zoom Out
- Can be integrated to LAN and HIS
- Statistical Analysis function
- Multi Format Report Facility
- Colposcopy REID Evaluation
- Variable Electronic Green Filter- facility to choose from 3 different grades of EGF

# FETAL MONITOR / CTG/ NST

Model - selwin M2



## *Features:*

- 10.2" high resolution color TFT display with screen foldable up to 90 degrees.
- Built in thermal printer
- Special high sensitive probe with 9 crystals.
- More than 24 hours data storage with playback and print functions.
- Rechargeable battery with 4 hours battery life in typical condition.
- Digital signal processing technologies for real time identify and measurement of FHR ensures accurate and reliable results.
- Automatic fetal movement detection and accounting.

## ***Specifications:***

### ***FHR:***

- Transducer: multi crystals, wide wave beam, pulsed wave working mode.
- Working frequency: 1.0 MHz
- Signal processing: Special DSP system and pattern recognition.
- Measurement range: 50 ~ 210 bpm

### ***TOCO:***

- Measurement range: 0 – 100 units

## ***Optional:***

- Touch screen function
- Wireless and water proof transducer.
- Maternal SpO2, MHR and NIBP measurement.
- FAS (Fetal Acoustic Stimulator).
- Twins FHR measurement.

## ***Dimension (DWH)***

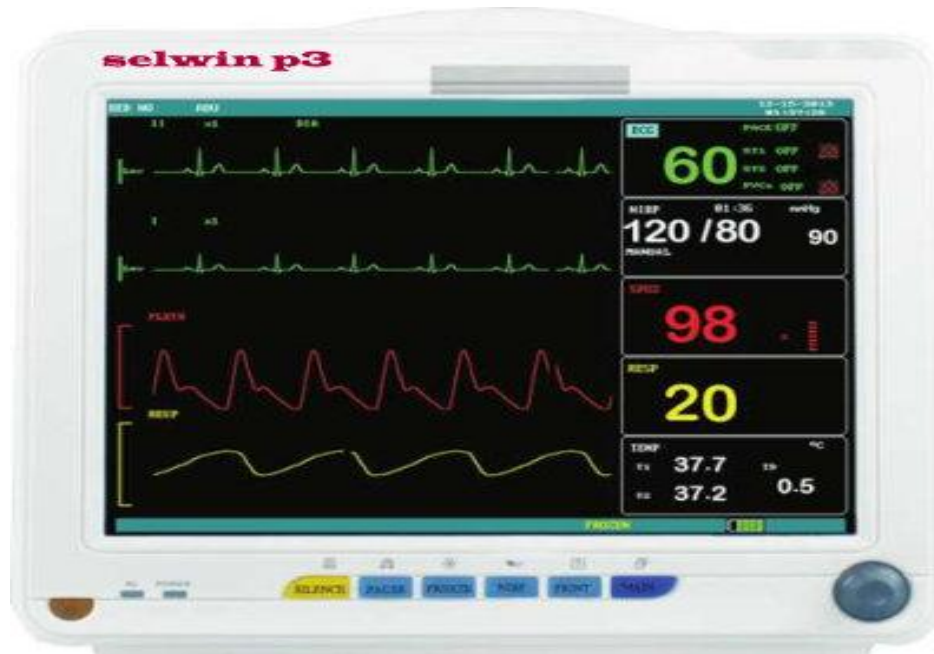
- 295 x 240 x 73 (mm)

## ***Weight***

- 1.75 kg

# Multi Parameter Patient Monitor

## Model-selwin p3



### *Features:*

- 12.1" color TFT screen with multichannel waveform display.
- Suitable for adult, pediatrics and neonatal use.
- Recharge built in Li Battery.
- Easy to use, simplified menu and dedicated user keys.
- Easy connecting with central monitoring system.
- 96 hours data storage capacity.

### **TECHNICAL SPECIFICATIONS:**

#### **ECG**

Number of leads: 3 leads or 5 leads

Frequency response:

Diagnostic: 0.05 – 130 Hz

Monitoring: 0.5 – 40 Hz  
Surgery: 1 – 20 Hz  
ESU protection: Yes  
Defibrillator protection: Yes  
Pacemaker detection Yes

### **PluseOximetry (SpO<sub>2</sub>)**

Range: 0% - 100%  
Resolution: 1%  
Accuracy: 70% - 100%  $\pm$ 2%  
Method: Dual wavelength LED

### **Non Invasive Blood Pressure (NIBP)**

Method: Oscillometric during inflation  
Range:  
Adult: 40 – 270 mmHg  
Pediatric: 40 – 200 mmHg  
Neonate: 40 – 135 mmHg  
Automatic measurement cycle: 1 – 360 min  
STAT mode: 5 minutes of continuous measurement  
Resolution: 1 mmHg  
Accuracy:  $\pm$  3 mmHg

### **HR / PR**

Source: User selectable; Smart, ECG, Pleth, NIBP  
Range:  
NIBP: 40 – 240 bpm  
ECG: 15 – 300 bpm (adult)  
15 -350 bpm (neonate)  
SpO<sub>2</sub>: 20 – 300 bpm  
Accuracy:  $\pm$  1 bpm or  $\pm$  1% (ECG) whichever is greater  
 $\pm$  3 bpm (SpO<sub>2</sub>, NIBP)

### **Respiration Rate:**

Rate: 70 – 120 bpm (ECG)  
Resolution: 1 bpm  
Accuracy:  $\pm$  2 bpm

**Temperature**

Channels: 2

Range accuracy: 71.6°F – 122°F (28°C – 50°C):  $\pm 1^\circ\text{C}$

Display resolution:  $\pm 1^\circ$

**Interface and Display**

Display: 12.1" active color TFT

Resolution: 800 \* 600 pixels

Waveforms: Maximum 9 channels

**Power Requirements:**

Voltage: 100 – 250V; 50 -60 Hz

Power consumption: 70W

**Environmental**

Operating temperature: 32°F – 104°F (0°C – 40°C)

Storage temperature: -4°F – 140°F (-20°C – 60°C)

Operating humidity: Less than 85%, non-condensing.

# Advanced Radiant Warmer

Model - I Core 10





## ***The New Benchmark for Infant Warming***

I core 10 is the economy and superior techno solution for infant warming .

Attractive aesthetic design meets superior technology in I core 10 Radiant warmer .

Microprocessor designed controlling with Thermistor temperature sensor for accurate temperature monitoring and controlling

- Microprocessor based design
- Thermistor Temperature sensor
- Infra-red Quartz Heater with Infra-red Ceramic heater option
- Specially designed SS parabola reflector assure uniform heat distribution bed
- Large Display for Patient Temperature and Set Temp
- Wall Mount Warmer variant also available
- Detailed Visual and Audible alarm
- Servo Skin and Manual Mode of operation
- Bed Tilting facility and Warmer head sliding facility
- Monitor Stand and IV stand

# Premium LED Phototherapy

Model - IREX



## ***The Innovative LED Phototherapy Unit for the treatment of newborn Jaundice***

Phototherapy is the preferred method for the treatment of neonatal jaundice .LED phototherapy is the clinical and technical proven method available in the industry.

IREX LED phototherapy is one of the first generation LED Phototherapy in India.

I Rex LED phototherapy uniquely designed with 4 mode of operation with different spectral irradiance for the make treatment more users friendly

The uniqueness of Swift Mode and User Mode makes I rex LED phototherapy became the best in LED Phototherapy.

I Rex LED phototherapy Unit is available in Double surface configuration also for Intensive phototherapy

### **Features:**

- Four Mode of Operation
- Intensity Control facility from 15 – 60 Micro Watt/cm<sup>2</sup>/nm
- No Ultra violet – No Skin rashes
- No Infrared – No Fluid loss/weight loss /Hyperthermia
- Total usage Timer and Patient timer
- On Board Calibration
- Double surface up gradation facility
- Low Power consumption
- Long Life of LED source – 20,000 Hours

## **Performance Specification:**

Light Source                    High bright Blue LED – For treatment

White LED for Observation

Wavelength                    450 -465 nm Peak at 458 nm)

Spectral Irradiance            15 - 60 Micro/cm<sup>2</sup>/nm

Surface area                    50 X 30 cm

## **Electrical Specifications**

Electrical Input                220 – 240 V, 50 – 60 Hz

FUSE                              2A, 220 – 240 V, 50 – 60 Hz

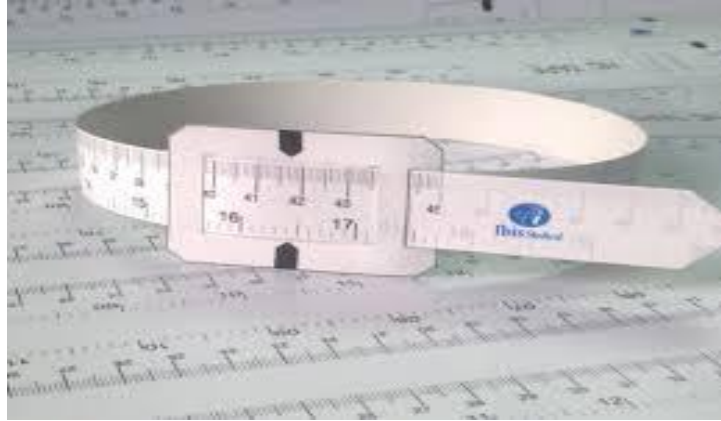
## **Physical Specifications**

Light Unit                        355 X 260 X 90 mm

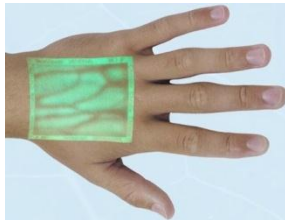
Height                            110 X 170 mm

Clearance of Base              75 mm

Tilt adjustment                 +/- 180 degree



**Head Circumference tape**



**Vein Viewer**



**Baby weighing machine**

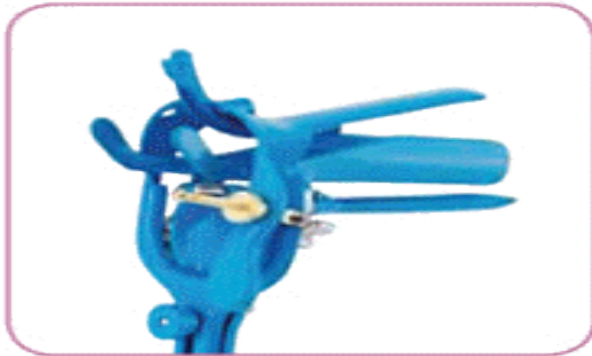
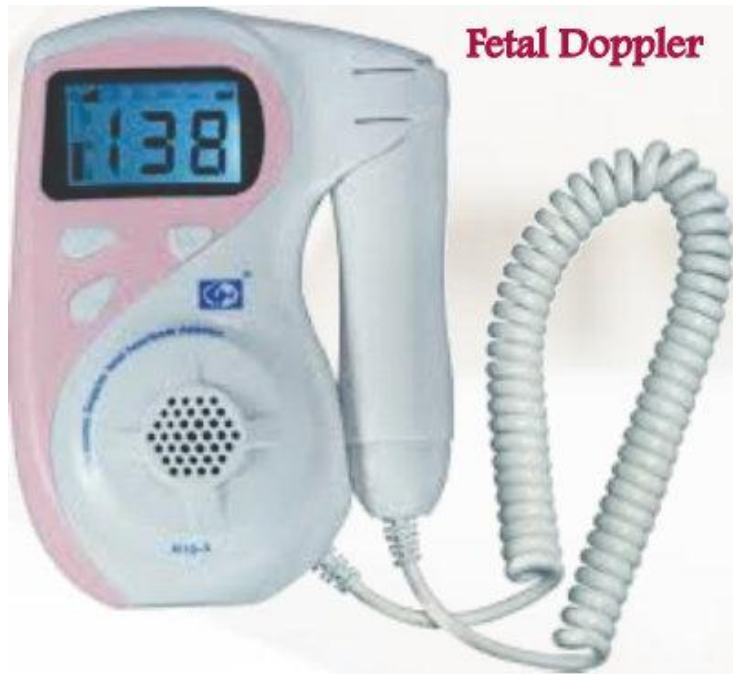


**Infrared Thermometer**

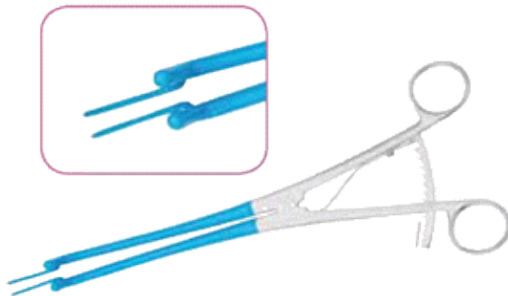


**Infrared Thermometer**





**Insulated Cucus speculum**



**Endo Cervical Speculum**





Loops



Surgical



TischlerForcepRotating



TischlerForcepWith Lock

